

Channel Entry / Exit & Southern Turning Basin Depths

Number: PH 02/25

Date Issued: 28/01/2025

Date of Effect:	28 January 2025
Details:	Port Hedland Lumsden Point, the back end of harbour (the wedge section), channel entry / exit & southern turning basin depths.
Former Notice:	PH 12/24 - Superseded
Charts & Publications:	AUS 53
Further Notice:	N/A
Attachments:	Chartlets depicting Lumsden Point, the back end of harbour (the wedge section) and channel entry / exit & southern turning basin depths.

Port users are advised that based on the dredging and hydrographic surveys carried out in January 2025 on Lumsden Point and the back end of the harbour (the wedge section) and the previous survey in April 2024, the declared depths are indicated in the table below.

LOCATION	DECLARED DEPTH
Beacon 30/31	10.1m at chart datum Subject to the attachment - PH channel entry post dredge Beacon 30 April 2024
Beacon 26/28	10.5m at chart datum
Beacon 15/16	13.4m at chart datum
Southern Turning Basin	14.9m at chart datum

Pilots are particularly reminded that when using 30/31 entry, they must avoid the highlighted areas of less than 10.1m declared depth up to 240m NNW of Beacon 30 (please see the chart below this notice with colour coded depths – Port Hedland channel entry post dredge beacon 30 April 2024).

Vessels entering / exiting the Port Hedland channel will require a UKC of 2.5m, based upon the declared depths. The Harbour Master may approve a reduction in this requirement in exceptional circumstances.

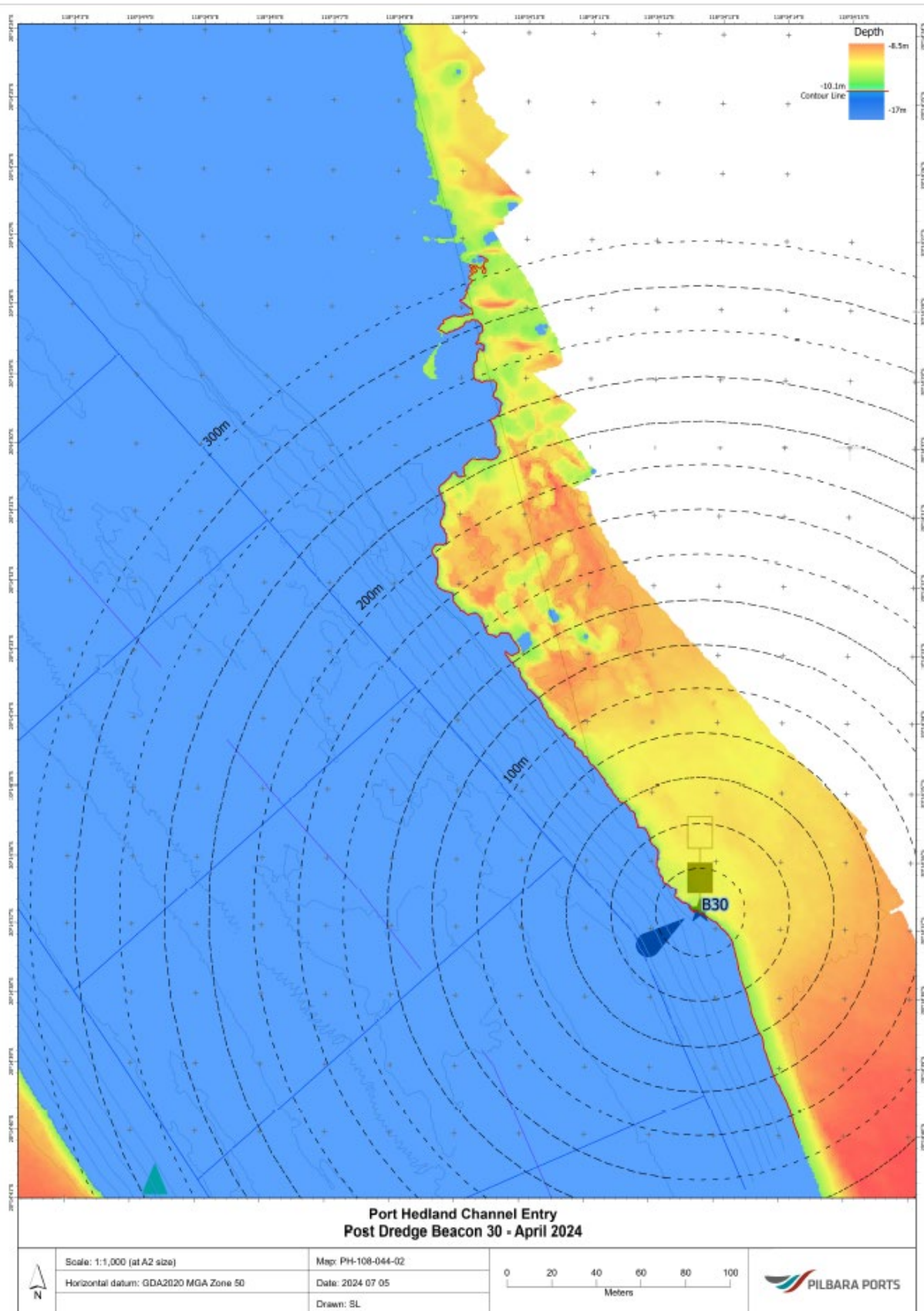
Vessels berthing at the Port of Port Hedland must have a minimum of 1.2m UKC at all times in the applicable turning basin.

For further information or clarification regarding this notice, please contact the Harbour Master Team.

Thank you for your attention and commitment to maintaining the safety and efficiency of Pilbara Ports.



Behrouz Daei Zadeh
Harbour Master East (Port Hedland)



All current Local Marine Notices are available on our website: [Local Marine Notices](#)
Port Hedland Harbour Master Team | Phone: (08) 9173 9030 | Email: ph.hmteam@pilbaraports.com.au
 Mariners and other port users are requested to notify the Harbour Master on the discovery of new or suspected dangers to navigation within the port.

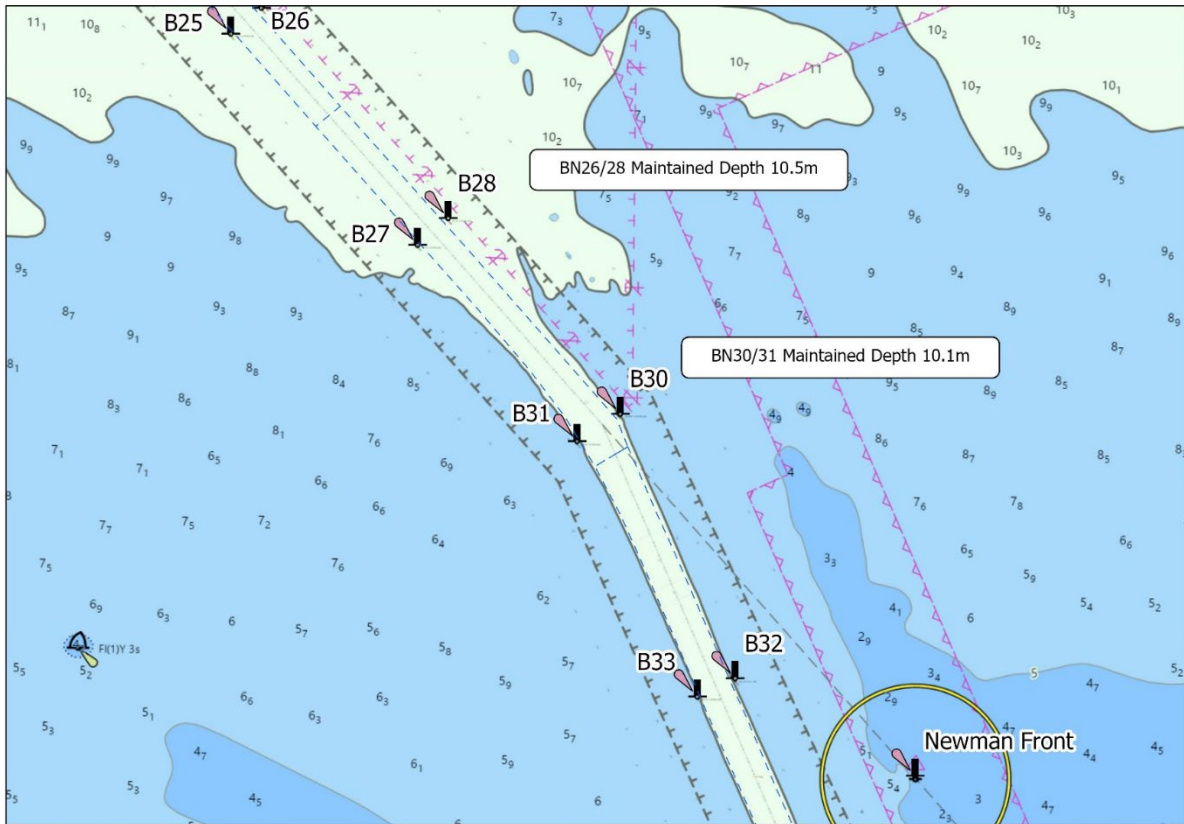


Figure 1. Beacon 26/28 & 30/31 Channel Entry/Exit Maintained Depths

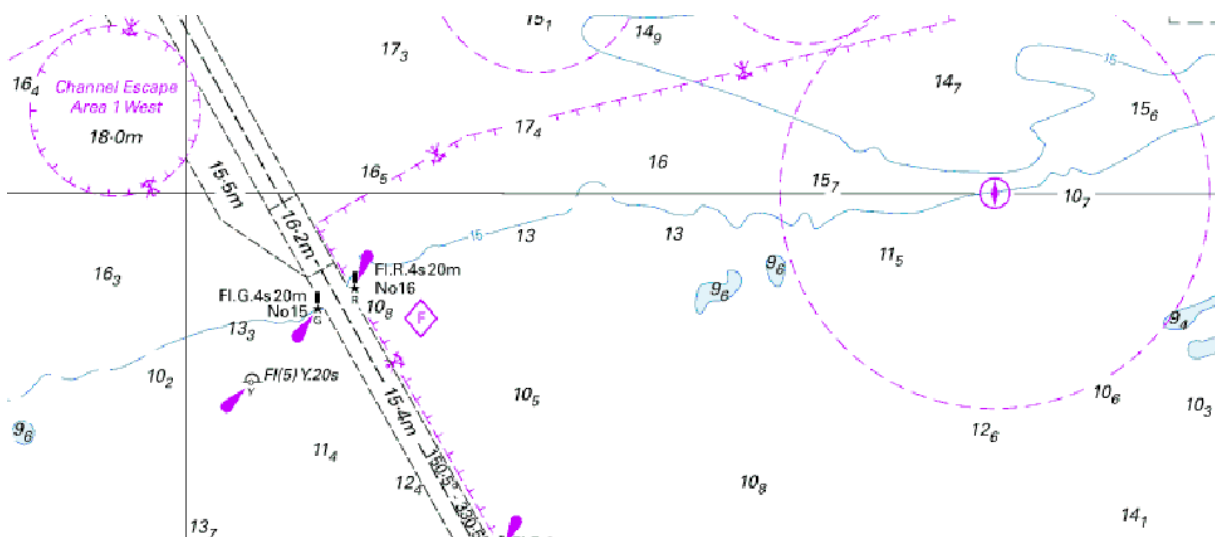


Figure 2. Beacon 15/16 Channel Entry/Exit Maintained Depth

All current Local Marine Notices are available on our website: [Local Marine Notices](#)
Port Hedland Harbour Master Team | Phone: (08) 9173 9030 | Email: ph.hmteam@pilbaraports.com.au
 Mariners and other port users are requested to notify the Harbour Master on the discovery of new or suspected dangers to navigation within the port.

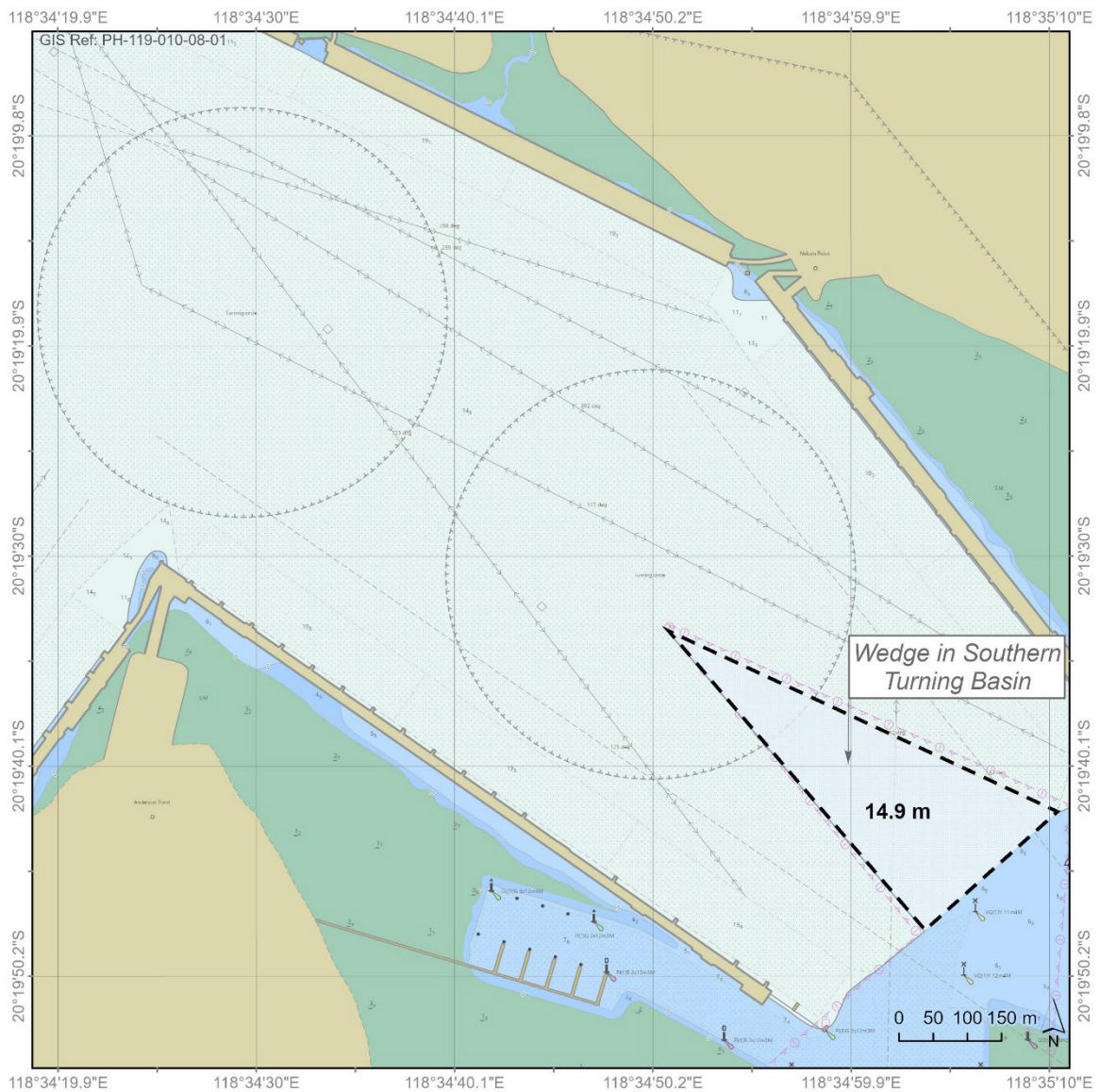


Figure 3. Southern Turning Basin Maintained Depth