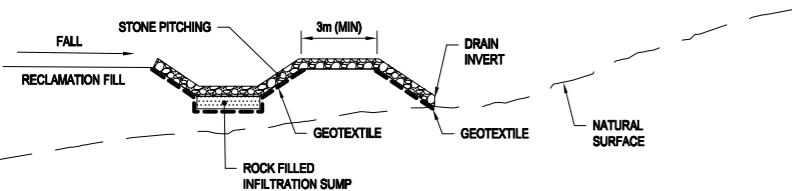
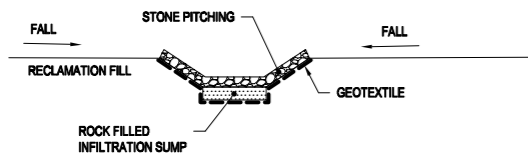


TYPICAL SECTION A-A  
NTS



TYPICAL SECTION B-B  
NTS



TYPICAL SECTION C-C  
NTS

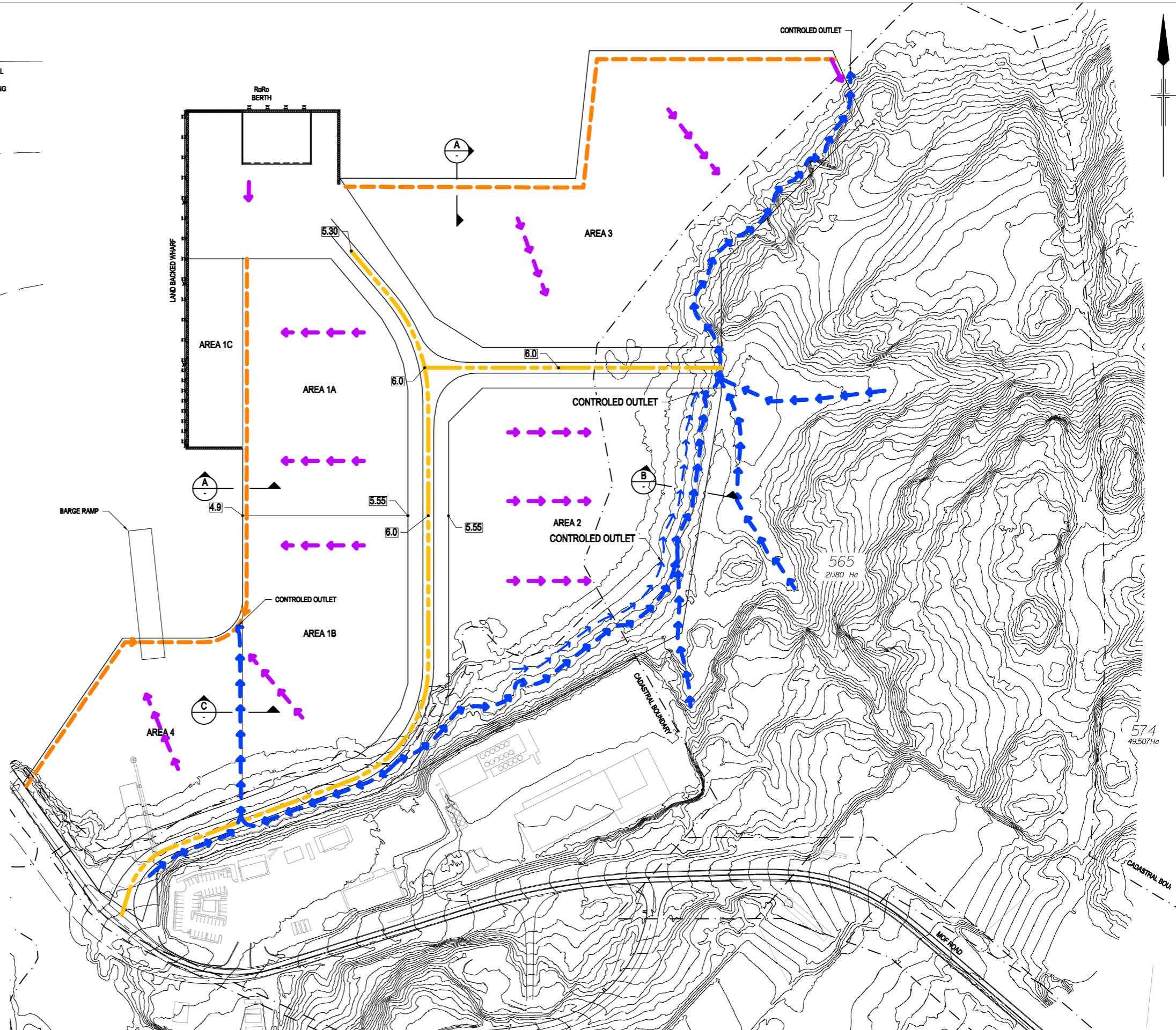
NOTES:

- APPROPRIATE SEDIMENT CONTROL MEASURES WILL BE INCORPORATED WITHIN DRAINAGE CHANNELS

LEGEND

- EXISTING SURFACE CONTOURS (1m INTERVAL)
- LOT BOUNDARY
- PROPOSED DIRECTION OF RUNOFF
- PROPOSED DRAINAGE CHANNEL
- SEDIMENT COLLECTION CHANNEL
- HIGH POINT
- PROPOSED ELEVATIONS

GRID : MGA94 Z50  
DATUM: AHD



<b>B</b>	SECTIONS CHANGED AND SECTION C-C ADDED	YV			
<b>A</b>	FOR REVIEW	YV			
No	Revision	Note: * indicates signatures on original issue of drawing or last revision of drawing	Drawn	Checked	Approved
					Date



**DO NOT SCALE**

Conditions of Use.  
This document may only be used by GHD's client (and any other person who GHD has agreed can use this document) for the purpose for which it was prepared and must not be used by any other person or for any other purpose.

Drawn	YV NOV 09	Designed	
Drafting Check		Design Check	
Approved			
Date			
Scale	1:1500	This Drawing must not be used for Construction unless signed as Approved	

Client	<b>DAMPIER PORT AUTHORITY</b>		
Project	<b>DAMPIER MARINE SERVICE FACILITY</b>		
Title	<b>CONCEPTUAL DRAINAGE PLAN</b>		
Original Size	<b>A1</b>	Drawing No:	<b>61-24558-SKETCH 6</b>
		Rev:	<b>B</b>