

MINUTES					
SECTION 1: MEETING INFORMATION					
Meeting No:	25			Objective Ref:	
Project / Meeting:	Port of Port Hedland Community Consultation Committee (PHCCC)				
Location	Hedland Tower				
Purpose/ Scope					
Date:	09/04/2024	Start time:	16:15	Time closed:	18:00
SECTION 2: PARTICIPANTS' DETAILS					
Name		Organisation		Initials	
Phil Christy		Pilbara Ports		PC	
Lindsay Copeman		Pilbara Ports		LC	
Mark Logue		Pilbara Ports		ML	
Craig Barbour		Pilbara Ports		CB	
Ariana St-Pierre		Pilbara Ports		AS	
John Freimanis		Pilbara Ports		JF	
Karlene Bylund		Pilbara Ports		RB	
Ambika Rebello		TOPH Councillor		AR	
Rebekah Worthington		Community Member		RW	
Narelle		Community Member			
Joel Schreiber		Community Member		JS	
Tekohi Caves		Community Member		TC	
Gary Silcock		Community Member		GS	
Roger Higgins		Community Member		RH	
Arnold Carter		Community Member		AC	
SECTION 3: AGENDA					
Item	Agenda Topic			Action Items	
				Whom	
1.	WELCOME / INTRODUCTIONS / APOLOGIES			PC	
1.1	MINUTES OF LAST MEETING The minutes of the Port Hedland Community Consultation Committee Meeting held in November 2023 were accepted as a true and accurate record			PC	

MINUTES					
2.	ACTION ITEMS			PC	
3.	SAFETY PERFORMANCE			PC	
4.	MARINE OPERATIONS UPDATE			LC	
5.	LANDSIDE OPERATIONS UPDATE			CB	
6.	ENVIRONMENT AND HERITAGE UPDATE			ML	
7.	COMMUNITY UPDATE			AS	
8.	PROJECTS / SPECIAL ISSUES <ul style="list-style-type: none"><li>• SPOILBANK MARINA</li><li>• LUMSDEN POINT</li><li>• HMI</li></ul>			JF JF KB	
9.	DISCUSSION AND QUESTION / OTHER BUSINESS			PC	
SECTION 4: NEXT MEETING					
Date:		Time Open:		Time Close:	

---

**Minutes of meeting held at the Hedland Tower**

**ITEM 1 WELCOME AND INTRODUCTION OF MEMBER**

Chair welcomed all present and declared the meeting open at 16:15. The chair commenced the meeting with an introduction of all members in attendance.

**ITEM 1.1 RECORD OF ATTENDANCE/APOLOGIES**

Attendance

General Manager Marine (Chair)	Philip Christy (PC)
Harbour Master Port Hedland	Lindsay Copeman (LC)
Stakeholder Engagement Advisor	Ariana St-Pierre (AS)
Senior Environment Advisor	Mark Logue (ML)
Port Manager Port Hedland East	Craig Barbour (CB)
Project Director	John Freimanis (JF)
General Manager Port Hedland Maritime Precinct	Karlene Bylund (KB)
Town of Port Hedland Councillor	Ambika Rebello (AR)
Community Member	Narelle (N )
Community Member	Tekohi Caves (TC)
Community Member	Gary Silcock (GS)
Community Member	Rebekah Worthington (RW)
Community Member	Roger Higgins (RH)
Community Member	Joel Schreiber (JS)
Community Member	Arnold Carter (AC)

Apologies

Town of Port Hedland Councillor	Lorraine Butson (LB)
Community Member	Katrina Seng (KS)
Community Member	Phil Smeeton (PS)
Community Member	Rikki-Lee Watkins (RW)

**ITEM 2 ACTION ITEMS**

Nil.

**ITEM 3 SAFETY PERFORMANCE**

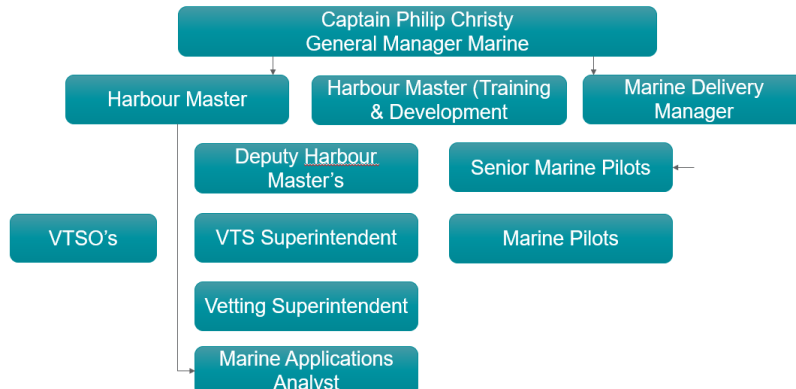
*General Manager Marine Philip Christy*

- Pilbara Ports' Total Recordable Injury Frequency Rate is 4.98.
- The safety of every employee, contractor, service provider and visitor to Pilbara Ports' sites remains our highest priority.

**ITEM 4 MARINE OPERATIONS UPDATE**

*Harbour Master Port Hedland Lindsay Copeman*

**Marine team update:**



**Port Statistics:**

February 2024: 39.458 million tonnes, no change from 2023.  
 January 2024: 43.012 million tonnes, decrease 12% from 2023.  
 December 2023: 50.394 million tonnes, increase 1% from 2023.  
 November 2023: 45.751 million tonnes, decrease 5% from 2023.

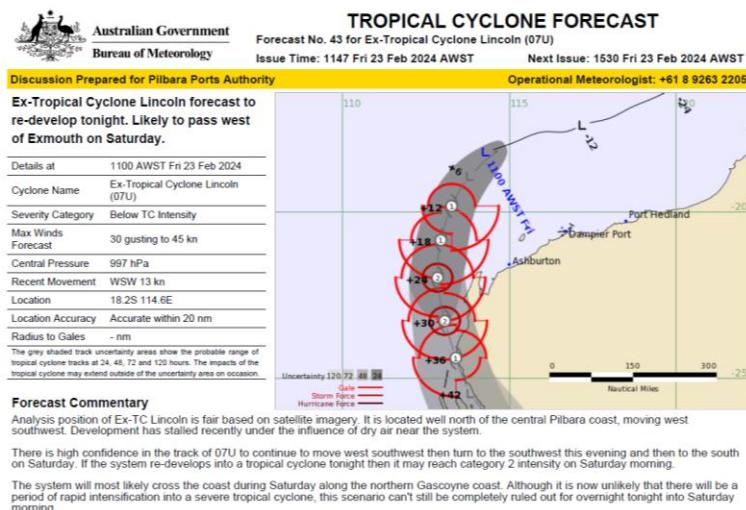
**Marine incidents at Port Hedland: 1 November 2023 – 29 February 2024**

Total marine events: 18

While these have been classified as incidents, these are marine events which have each been successfully handled in line with our emergency response procedures and marine team.

**Port Operations**

**Weather Event – Ex Tropical Cyclone Lincoln**

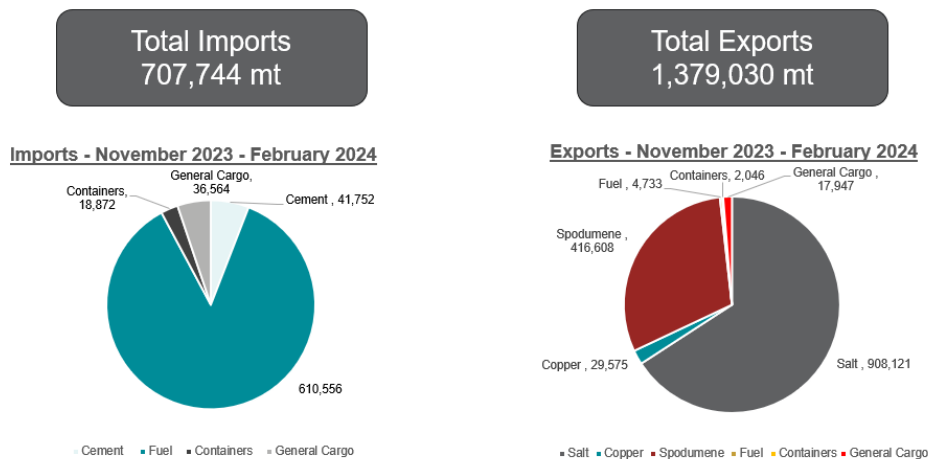


There was a question about the financial cost of clearing the Port of Port Hedland. Pilbara Ports advised that it is significant, however the safety and risk mitigation is the priority above commercial consideration.

## ITEM 5 LANDSIDE OPERATIONS UPDATE

*General Manager Terminal Operations Craig Barbour*

### Eastern Harbour – Statistics



- 102 ship visits at PH1, PH2 & PH3 during November – February
- January marked the first fuel export bunkering operation to supply offshore support vessels. This trade has now increased to approx. 5 visits per month.
- Direct freight services remain consistent, with 613 containers imported and 505 containers exported during the reporting period.
- During December, Navy vessel HMAS Toowoomba stopped in at PH2 for provisions on its way to Fremantle.

### Biosecurity – Eastern Harbour

- The Pilbara Ports Biosecurity team is continuing to grow and the team has now inspected over 1500 rotainers and containers.
- The team plays a vital role (along with the local Biosecurity Agents) to ensure that any Biosecurity Risk Material is identified and prevented from entering the Pilbara environment.
- A variety of material has been detected to date including: snails, mould, grasshoppers, infested corn, soil, leaves, cockroaches, spiders, wasps, silverfish and many others!
- Interestingly, some of the tree snails, amber snails and timber boring insects are new species that haven't been seen before by the Port.

### Utah Point

- 65 vessel loaded through Utah Point during November – February equating to 6.93 million tonnes
- Hedland Mining first ore and first Vessel achieved in February – 80,469T

- Atlas stockyard 2 expansion completed in November – Improved stockyard layout, bunker capacity and outload rate
- Approval of L8937 Environmental Licence throughput increase from 24.1Mtpa to 28Mtpa received in November
- Berth Utilisation for PH4 85% up 6.5% from same period last year
- Multiple New proponents showing interest in out loading through Utah Point

There was a question about what the percentage of lithium is leaving the Port. Pilbara Ports advised that annually about 40%, which averages on 1.2 million tonne.

There was a question about if fuel ships come to Hedland from Singapore before heading down to Fremantle. Pilbara Ports advised that ships usually come from Singapore and Asia. Vessels that come to Port Hedland will discharge a full fuel cargo.

## **ITEM 6 ENVIRONMENT AND HERITAGE UPDATE**

*Senior Environmental Advisor Mark Logue*

### **State Wide Array Surveillance Program**

- Monitoring for Invasive Marine Pests on going with Port proponents and DPIRD
- Run twice a year for a period of two months (Winter and Summer soaks)
- Five deployment locations around the Port
- Results for Winter 2023 (August – October) reported no new incursions

### **MEQSAP 2023**

- 2023 is the start of 'Phase 2' moving away from baseline (Phase 1) monitoring to sampling and analysis.
- Marine water and sediment quality results were all within acceptable ranges and water quality objectives were achieved.
- Healthy marine environment alongside a busy commercial port equals strong environmental management practices.

### **Environmental Approvals**

- Amalgamation of MS967 and MS812 to allow for development of the Lumsden Logistics Hub
- Application for Works Approval and Part V Licence to allow for construction and operation of Lumsden Logistics Hub and Bulk Handling Facility

There was a question about who officiate and determines the inspections. Pilbara Ports advised that the Environment team collects samples and send them to DPIRD for analysis. The type of outbreaks determines which department gets involved.

There was a query about if Pilbara Ports cover the costs of collecting the samples. Pilbara Ports advised that costs are divided between Pilbara Ports and DPIRD.

There was a question about if its true that Curtin University research can detect DNA of marine life in water samples. Pilbara Ports advised that yes, its accurate.

## **ITEM 7 COMMUNITY UPDATE**

*Stakeholder Engagement and Communications Advisor Ariana St-Pierre*

- Community Support Initiative: Community groups can apply for up to \$10,000 in small grants through PPA's Community Support Initiative (CSI). Applications are accepted year-round from community groups in Port Hedland, Dampier/ Karratha, and Onslow.
- Pilbara Ports has recently supported the following Port Hedland Community Groups through its Community Support Initiative (CSI):
  - Hedland Kart Club: \$6,000 for the improvement of their kart track safety
  - U14's Elite Development Basketball Squad: \$2,500 for the 2024 Country Championship
  - Port Hedland Golf Club: \$2,000 for the Roy Hill Golf Classic
  - Junction Co: \$3,000 for the Jury Art Prize
  - Town of Port Hedland: \$3,000 for their Community Arts Network
  - Youth Involvement Council : \$2,000 for Hedland's got Talent

There was a question about if school visits are possible at Pilbara Ports. Pilbara Ports advised that they have facilitated several school visits recently.

There was a question about if the footpath between the Esplanade Hotel up to Marapikurrinya Park will be upgraded. Pilbara Ports advised that we will investigate who owns the land.

There was a query about how much will the new Seafarers Centre cost. Pilbara Ports advised that the land was purchased for \$2 Million and that \$500,000 was allocated for the demolition of the former centre. The new funding scheme developed involving multiple players in town will provide \$13.5 million to build a new centre. Pilbara Ports is very invested in the welfare of the seafarers.

There was a question about if the Mission to Seafarers Australia will have equity in the building. Pilbara Ports advised that the building will be built by us, and the Mission to Seafarers Australia will manage the services.

There was a query about if the project scope will include a restaurant. Pilbara Ports advised that the priority for the project scope is the welfare of the Seafarers. Pilbara Ports will work with the Mission to Seafarers Australia through the project and remain within budget.

## **ITEM 8 PROJECTS / SPECIAL ISSUES**

### **ITEM 9.1 SPOILBANK MARINA**

*Project Director John Freimanis*

#### **Project Update**

- Boat ramp, car park and main access road opened 6am, Saturday 20 January 2024.
- Local Member for the Pilbara, Kevin Michel MLA, officially opened the boat ramp, with Marine Rescue Port Hedland's *Iron Pride* the first boat in the water.
- The boat ramp is currently open 6am – 6pm, with opening hours to be increased permanently to 24-hours a day within the next month.
- The next stage to open will be the boat pens and public jetty, which is expected mid-2024
- Construction is under way on retaining walls and landscaping areas.



- Installation of the underground services (irrigation, sewer, power, communications and water) is nearing completion.
- Construction of curved seating is under way. Seating is hand-made using local 'Karratha stone'.
- Design of the public art is complete, and fabrication is under way. First completed pieces expected to arrive on site later this month.

There was a question about what Pilbara Ports responsibilities will be now that Spoilbank Marina is nearly finished. Pilbara Ports advised that we are only responsible for the construction of the marina, the landside will be handed over to Town of Port Hedland and the management of the marine side will be handed over to Department of Transport.

There was a question about when the community will be able to see the concept plans for the community facilities. Pilbara Ports advised that the Town of Port Hedland will make those available soon.

## ITEM 9.2 LUMSDEN POINT

*Project Director John Freimanis*

### Key Features of the project:

- Pilbara Ports is progressing the delivery of the Lumsden Point project.
- Construction includes creating two seawalls, dredging of channel access and turning basins, construction of two new multi-user berths, and a central access road and service corridor connecting to Great Northern Highway, enabling private sector investment in a landside logistics hub.
- We are close to awarding **two major contracts** for dredging and land reclamation and the construction of the causeway.

There was a question about if the old dredge line could be rehabilitated. Pilbara Ports advised that there was no plan to rehabilitate this area.

## ITEM 9.3 HEDLAND MARITIME INITIATIVE

*General Manager Customer and Strategy Karlene Bylund*

### Of the estimated 404 eligible residential properties:

- 63% have been sold or are selling to HMI, including:
  - 2 properties are progressing to settlement.
  - 5 properties are at contract stage.
  - 246 properties have been acquired.
- 91% have been or are being valued.
- 344 offer letters have been issued.

### Short Stay Accommodation Partnership:

HMI, in collaboration with BHP, has identified an opportunity to allocate a number of vacant HMI acquired residential properties to be used as a short stay accommodation pool.



HMI and BHP have partnered on this initiative to create the accommodation pool with HMI providing the accommodation and BHP providing the funding for the provision of furniture for each of the short stay properties.

HMI is in contract discussions with an Operator to provide short stay accommodation management services.

### **Demolition of properties**

HMI is currently working with an experienced local contractor to demolish houses and structures on six HMI properties in the West End.

These buildings are being demolished as they pose significant safety concerns due to major structural defects.

The HMI is working with the contractor and the Town of Port Hedland to ensure the demolitions occur safely, including the removal of any hazardous materials.

There was a question about when the lease on the HMI Wedge Street office will be terminated. Hedland Maritime Initiative advised that there is currently no plans to close the Wedge Street office.

There was a question about if the plans to move the Hedland Maritime Initiative office near the waterfront were still being investigated. Hedland Maritime Initiative advised that these plans were no longer being pursued due to the costs involved in converting and refurbishing the building.

There was a query about who will make the final decision on the demolition of properties. Hedland Maritime Initiative advised that HMI is the party that will make the final decision, but does so following receipt of a structural integrity assessment. HMI noted that they currently have 4 properties that will be demolished. Those properties are old, structurally unsound and filled with asbestos. There is no intention of demolishing properties that are safe for occupancy and use in the interim.

There was a query about when will the short stay accommodation be available. Hedland Maritime Initiative advised that they will be available within the next 3 months.

There was a question about what the rates will be for the short stay accommodation. Hedland Maritime Initiative advised that the schedule of rates will be depending on the category of tenants and the size (number of bedrooms) in the property.

There was a question about if there were plans to demolish any existing occupied properties. Hedland Maritime Initiative advised that there are currently no plans to demolish occupied properties, only vacant ones and then only when they are structurally defective.

There was a question on the short-stay accommodation model about if there was a preference to allocate a property to one organisation or lease room by room. Hedland Maritime Initiative advised that properties would be leased as a single unit rather than leased by room to ensure risk is managed.

**ITEM 10 DISCUSSION AND QUESTION / OTHER BUSINESS**

Chair thanked all those in attendance and closed the meeting at 18:00.